

# INVISIRAIL™

GLASS RAIL SYSTEM™

Clearly the best choice!



[InvisiRail.com](http://InvisiRail.com)

# Get the look you've always wanted



You've worked hard to create that view. Choose InvisiRail for the best sight lines while providing safety and security for your family.

Our 10mm thick safety glass is tempered and heat soaked for strength and durability, engineered for building code compliance.

With 23 standard panel sizes and customizable options, we can design a system to fit virtually any deck.

# Make the most of your view



InvisiRail is the only glass railing system on the market that can span up to six feet with a single panel. With the lowest profile post and no top or bottom rail you experience the ultimate in wide open viewing.

Add our 25-year warranty, immediate delivery and ease of installation and the choice is clear!

# Optional top rail is building code compliant



Many jurisdictions are now mandating a top rail with glass guard rails. We've engineered a complete top rail system that can be included or retrofitted onto our railings.

Strong stainless steel brackets attach to the posts to secure a secondary fail-safe rail in the event of a glass panel being shattered.

Choose our elegant stainless steel piping or use your own pressure-treated, cedar or composite board. All options are building code compliant.

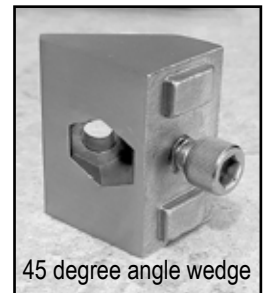
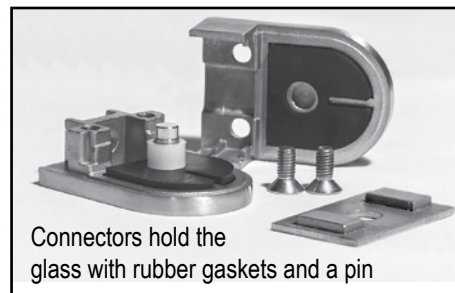


## Hardware and connectors



All our stainless steel connectors and accessories are 316 grade steel and have undergone a passivation process to further enhance corrosion resistance.

Our nuts, bolts and connection hardware are also 316 steel ensuring that you will enjoy years of trouble free performance.

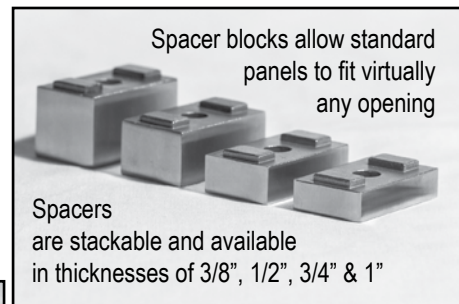
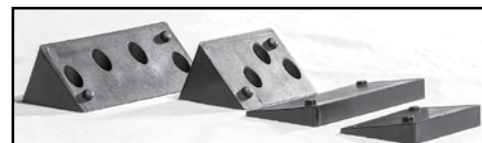
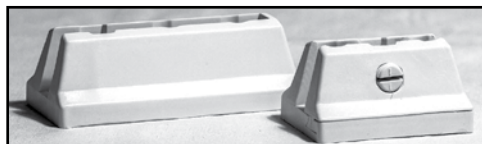


## Lite10 nylon connectors

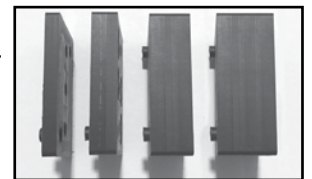
Our Lite10 hardware provides a more affordable option.

Available in black, white or cedar, they can attach to any flat surface.

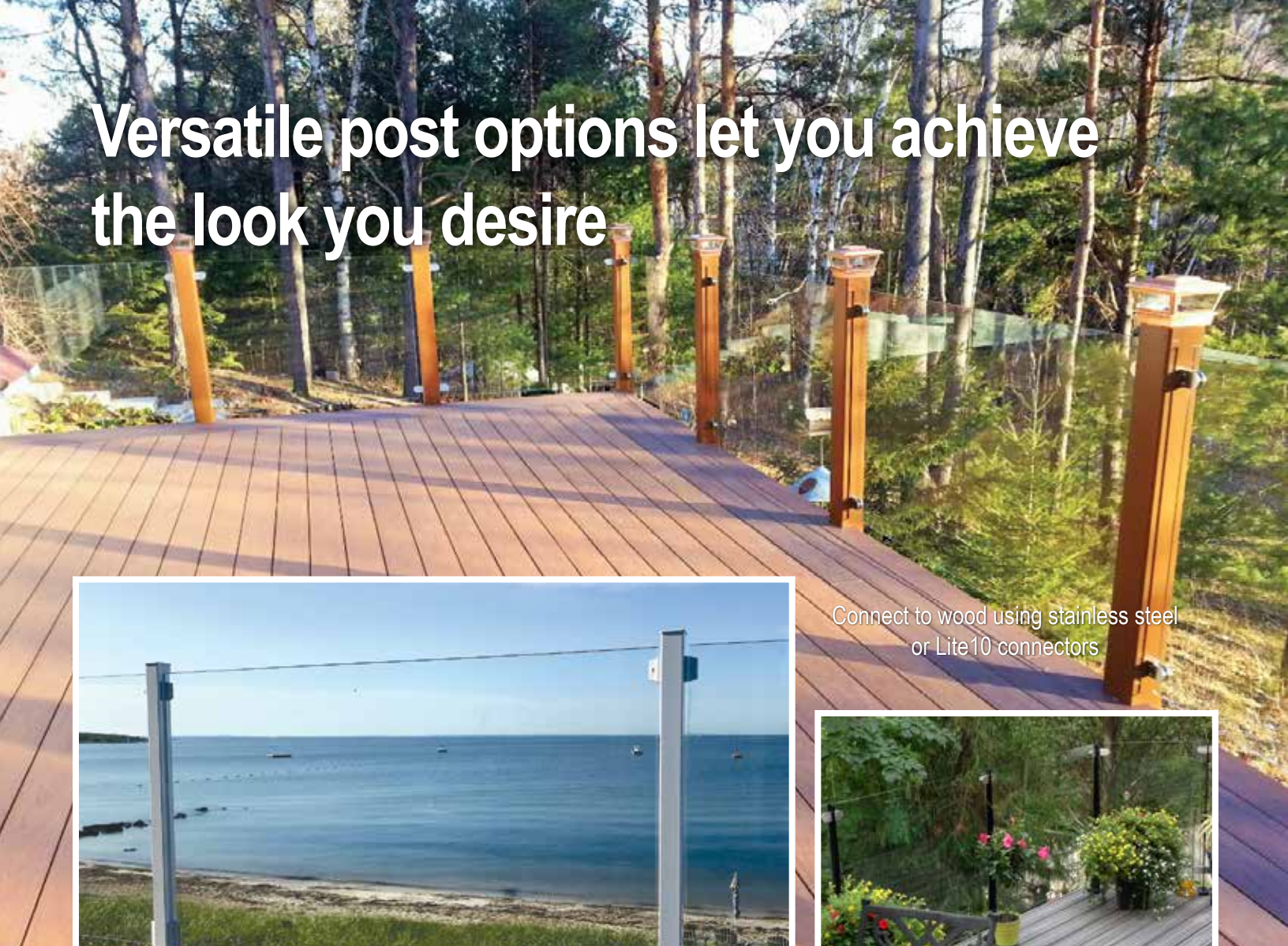
Stackable wedges can handle angle combinations in 11.25 and 45 degree increments.



Lite10 spacers are stackable and available in widths of 1/4", 3/8", 1/2" and 3/4".



# Versatile post options let you achieve the look you desire



Connect to wood using stainless steel or Lite10 connectors



Powder-coated aluminum Visti posts with Lite10 connectors are an economical choice



Powder-coated aluminum InvisiPosts are available with satin black or white, matte black or textured white finishes



Fascia-mount Visti post in black



Fascia-mount InvisiPost in white



5/16 X 3" heavy duty concrete anchor

5/16 X 6" hardened steel construction screws



Save precious deck space! InvisiPosts and Visti posts have fascia mount versions to maximize your outdoor living

# Budget friendly post and baluster combinations

Seamlessly transition to baluster rail on your stairs to save time and money on your project.

Our Deckorators ALX posts can be ordered with matching baluster kits. Available in satin black, matte black, textured white or bright new contemporary brushed aluminum finishes.

Accessorize your railing with lighted post caps to add elegant mood lighting.



ALX contemporary railing matches perfectly with stainless steel InvisiRail

# For the ultimate backyard pool

Safety, security and perfect sightlines are what you want in a pool enclosure. The InvisiRail pool system provides all this and more.



Our 54" finished glass height meets code requirements in most jurisdictions



Lockable gates feature heavy-duty self-closing hydraulic dampening hinges



## Wide-open viewing

Give your pool enclosure or deck railing an ultra-modern look with 12mm thick spigot mount glass.

Optional 1 5/8" round top rail meets building code requirements.

Railing heights of 36" to 60" made to order.



photo courtesy of fenceconsultants.com

# Distinctive interior railing



If you thought our glass railing system was just for outdoor applications then think again!

InvisiRail is a perfect choice for interiors where you want a brighter look and more spacious feeling.

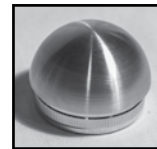
Add beauty and value to your home without sacrificing the safety of your loved ones.



# Stainless steel hand rail



Wall-mount, glass-mount and post-mount options available for 42mm (1 5/8") diameter and 50mm (2") diameter stainless pipe.



Choose end caps or 90-degree returns.



Joiners and pivots allow continuous rail along any shape and distance.



## Care and Maintenance

In most applications, stainless steel will not rust or stain. However, when stainless steel comes in contact with chloride salts, sulphides or other rusting metals, it can discolour or even rust and corrode.

To maintain the beauty and function of stainless steel for years to come you must:

- Clean stainless steel with soap and water
- Never use mineral acids, bleaches or coarse abrasives
- Always remove stains or tarnish as soon as possible with either soap and water or a stainless steel cleaner like Barkeepers Friend or CitriSurf .

Visit us at [invisirail.com](http://invisirail.com) to find the dealer nearest to you!

AVAILABLE AT:

FOLLOW • LEARN • LIKE

